

A2J Author® 3.0



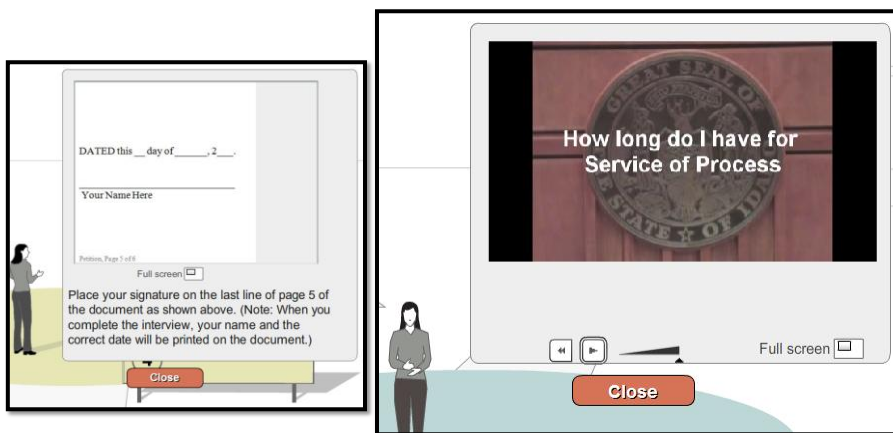
Agenda

- New Features
- Fixes

New Features

- ❑ Show Me Video and Show Me Graphics
- ❑ Branding Logo
- ❑ Copy/Paste
- ❑ Send Feedback
- ❑ Exit to Save
- ❑ A2J Navigation TF program variable
- ❑ Answer Saving Progress Indicator
- ❑ Uploader Tool
- ❑ And more...

Show Me Graphic & Video



Show Me Graphic & Video

- Show Me Graphic:

- .jpg
- .png
- .gif
- .swf



- Show Me Video:

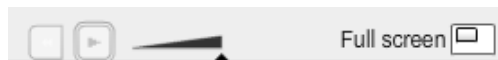
- .flv



- Option to scale to full screen

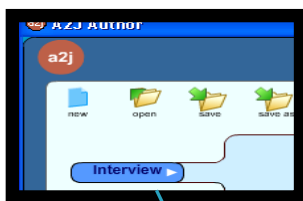


- Ability to adjust volume and pause video



Branding Logo

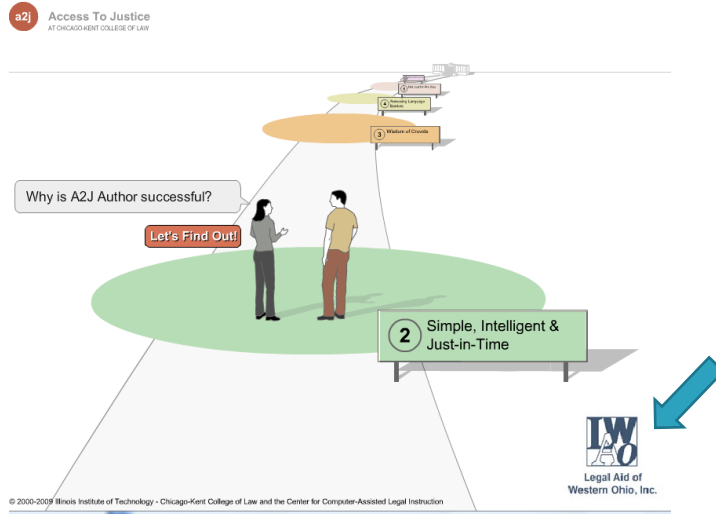
- Organizations publishing A2J Guided Interviews® can add their program's logo to the bottom right hand corner of the Interview interface.



- Simply attach a 120x120 pixel (.jpg, .png, .swf or .gif) graphic to the "Logo Graphic" field under the Interview tab.

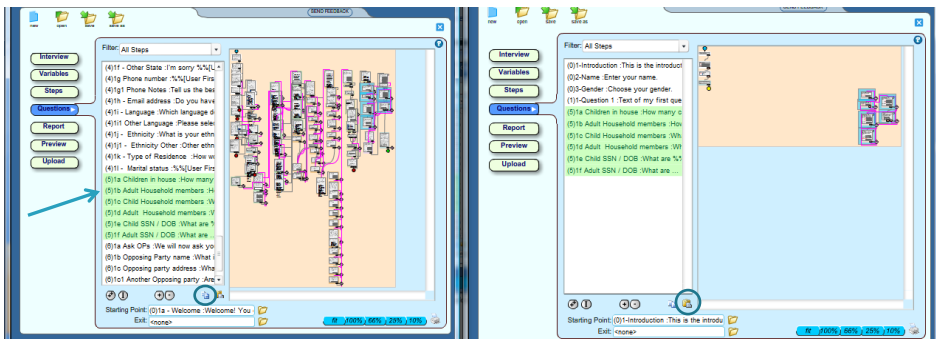


Branding Logo



Copy/Paste

- The ability to copy/paste text from one question to another will expedite the authoring process.
- Here's how:
 1. highlight the questions you want to copy, 2. select copy, 3. highlight question where you want copied questions inserted, 4. select paste



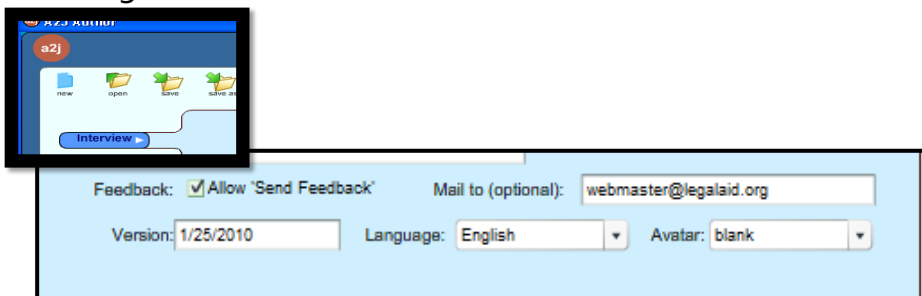
Move Multiple Questions in Flowchart

- Ability to move multiple questions at a time in the flowchart
 - CTRL + CLICK + DRAG



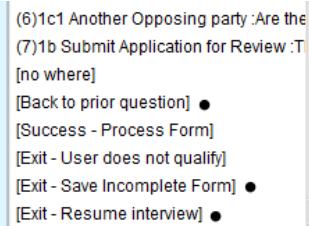
Send Feedback

- Decide whether you want the send feedback button enabled for end-users
- Decide whether you want the feedback returned to both CALI and a designated agent for your organization



Exit to Save on LHI

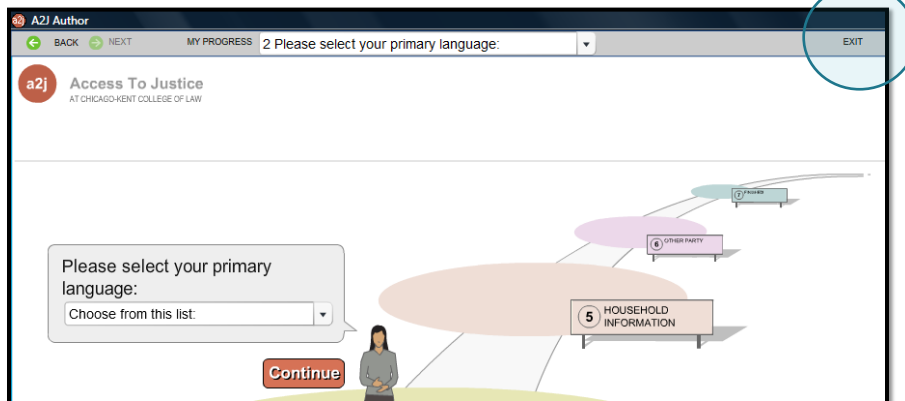
- Exit button in navigation menu
 - Switches to “resume” button once selected
- Exit questions
 - Custom questions written by author
 - Identified in Question tab
 - Buttons can be set to:
 - Back to prior question
 - Exit-Save Incomplete Form
 - Exit-Resume Interview



(6)1c1 Another Opposing party :Are the
 (7)1b Submit Application for Review :T
 [no where]
 [Back to prior question] ●
 [Success - Process Form]
 [Exit - User does not qualify]
 [Exit - Save Incomplete Form] ●
 [Exit - Resume interview] ●

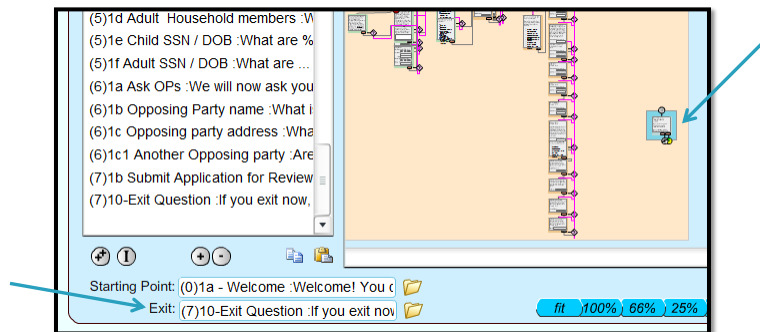
Exit Button

- The Exit button is located in the upper right-hand corner of the viewer.



Setting Up the Exit

- Add an Exit Question
- Identify the Exit Question



A2J Navigation TF

- Back/Next/My Progress menu items disappear entirely upon execution of the True/False program variable: A2J Navigation TF.
 - To use, enter the following condition under the Advanced Tab to force the action of setting a variable:
 - 1=1
 - Set Variable A2J Navigation TF to:
 - True or False, depending on whether you want the navigation buttons to appear in the menu
 - True = navigation turned on
 - False = navigation turned off

A2J Navigation TF = False

Conditions:

#1 AFTER: #1 IF TRUE THEN SET A2J Navigation TF=False

Event: After user presses button

Condition: 1=1

Actions:

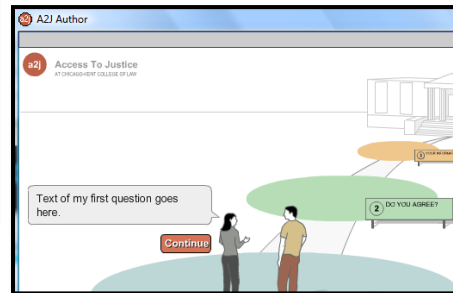
#1 IF TRUE THEN SET A2J Navigation TF=False

If: Action: Variable:

True set variable to value A2J Navigation TF

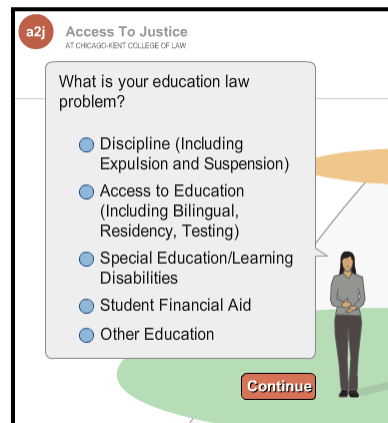
Value: False

- A2J Navigation TF set to False removes the Back/Next/MyProgress navigation



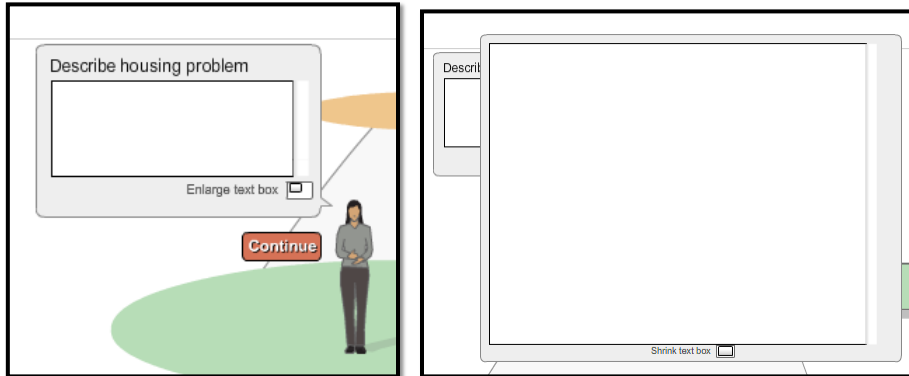
Cosmetic Changes

- Font changed to black
- Font for checkboxes and radio buttons enlarged to match the font size of question text



Long Text Field – Zoom

- End-Users can enlarge the long text field to more easily enter and edit long responses.

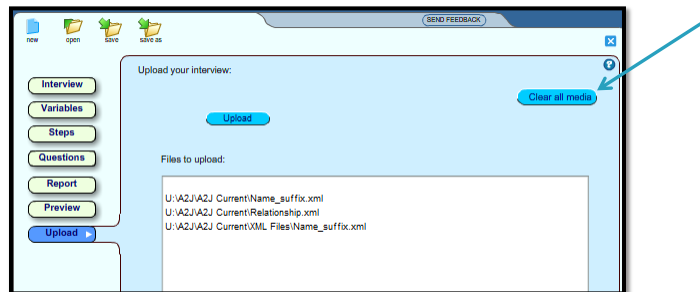


Answer Saving Progress Indicator

- Disables the submit button and all other menu items until the LHI server responds
- Eliminates duplicate submissions

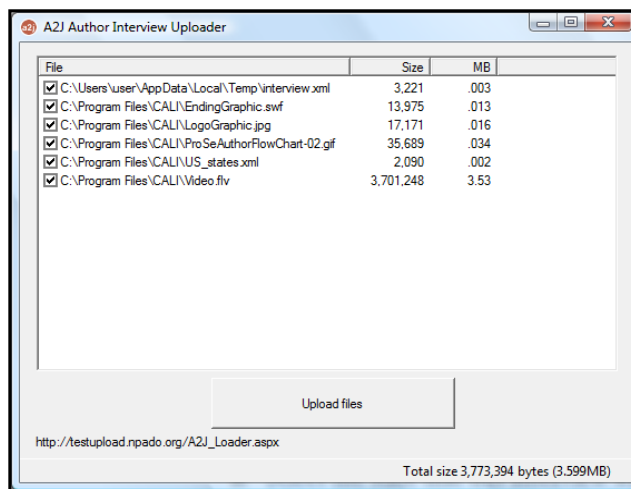
Clear Media Button

- Located under the Upload Tab
- Audio, Video, and Graphic file references deleted throughout the interview.



Uploader Tool

- A2J Author® Capacity:
 - Unlimited attachments
 - File size limit – 100mb
- LHI Limit=16mb
- Confirms file sizes on upload



Report Options

- Color only used on titles of each section
- Report options to suppress lists and routine prompts and filter steps

Fixes

- Viewer has been fixed to support the majority of interviews affected by the larger checkbox font size
- Pasting questions now includes popup content
- Inserting a question highlights the new question
- Debug bar is hidden
- Report questions sort properly
- Changing the field type from "list" to "text" erases the file attachment reference

A2J Author Updates

- New Program Coordinator !
 - **Dina Nikitaides**
Center for Access to Justice & Technology
Chicago-Kent College of Law
dnikitaides@kentlaw.edu or 312-906-5331
- Support for A2J Author®
 - Direct general how-to questions to the Listserv
→ docassembly@lists.lsntap.org (community & CAJT)
 - Inquiries or requests for assistance w/grants
→ Dina
 - Requests for software enhancements
→ “Send Feedback” button in the software

A2J Author® Trainings

- Training Schedule for 2010:

Trainings	Thursdays at noon Eastern
New User Workshops	1 st Thursdays
Advanced User Forums	2 nd Thursdays
Online Intake Group	3 rd Thursdays